

Doors 2 Success empowers participants of Grand Junction Housing Authority programs, in partnership with community organizations, by promoting stable housing through supportive services tailored to individual and household needs.

THE BIG PICTURE

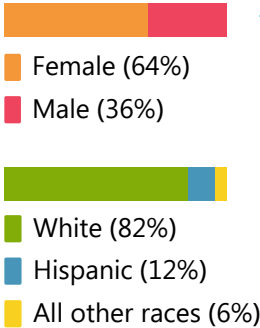
**97%**  
of the **1,053 households** served in 2024 were able to maintain stable housing and **were successful** in their pursuit of other program-specific objectives

**95%**  
of residents and 96% of voucher holders have household **incomes at or below 50% of AMI\***

**56%**  
of participants are people with **disabilities**

**95%**  
have a **single head of household**; a majority of whom are female

**17%**  
were homeless or at risk of **homelessness**



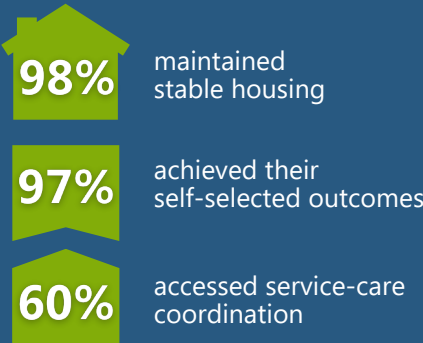
\*50% Area Median Income (AMI) for a three-person household in Mesa County (2024) is \$42,400.



SERVING OLDER ADULTS

Service Care Coordinators assisted an older adult resident at Linden Pointe in **finding in-home support services** to help him manage his housekeeping and stay lease-compliant. They also supported his **health needs** by scheduling appointments, providing transportation, and advocating with his medical team. A referral to **HopeWest PACE** (Program of All-Inclusive Care for the Elderly) and consistent collaboration with all involved secured wraparound services needed for him to continue to live independently.

Of the **884 older adult households** (1,000 individuals):

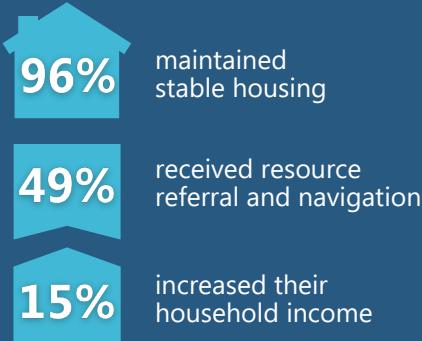


GJHA and Doors 2 Success **awarded four scholarships to current and past residents and clients** to help with tuition, books, fees, and supplies. These Colorado Mesa University (CMU) students are seeking degrees in accounting, education, and social work.



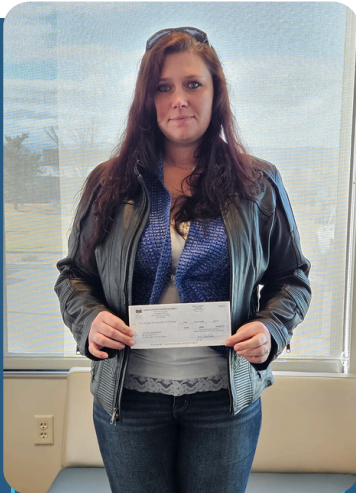
*"[Thank you] for not only giving me a backyard to play in as a kid, [but] a safe neighborhood to ride my bike around with my friends ... a wonderful home and help to earn a college education. Without this support, I would be a completely different person."* —2024 scholarship recipient

Of the **169 family households** (181 adults, 336 children):



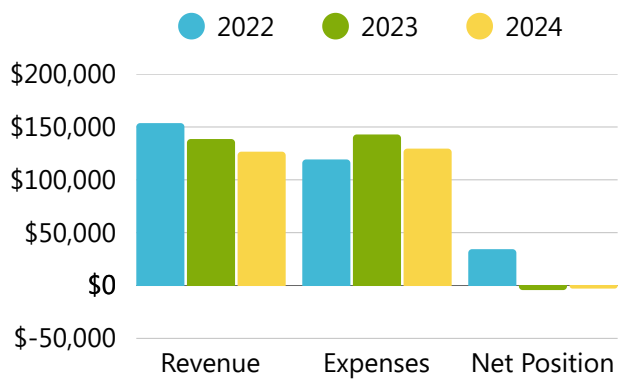
SERVING FAMILIES

The Family Self Sufficiency (FSS) program helps families build skills and financial assets to achieve economic independence, reducing reliance on housing subsidies. As participants' income grows, and rent increases, a dollar amount is matched and deposited into an **interest-bearing escrow account**, allowing them to build savings. Participants receive their full escrow balance upon program completion. In 2024, **three families graduated with a combined escrow payout of \$18,600.**

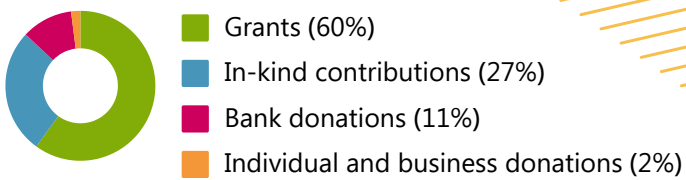


# FINANCIALS

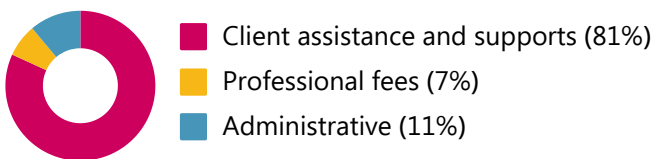
## Year-to-Year Comparison (2022-2024)



## 2024 Revenues



## 2024 Expenses



9.6%

of the supportive services budget was provided by Doors 2 Success

81.2%

of every dollar donated went directly to serve clients

### Many thanks to our 2024 funding partners ...

Alpine Bank • Ashleigh O’Leary • Bank of Colorado • Bank of the San Juans • Bruce Dickerson Fund • CHFA Direct Effect • Christi Reece Group: Circle Fund • City of Grand Junction Nonprofit Funds • Glacier Bank • Grand Valley Bank • Jill Norris • Katherine Schaneman • Krista Ubersox • Mary Beth and Bernie Buescher • Richard and Kathy Krohn • Rocky Mountain Health Foundation • Scott Aker • SGM • Sheila Brubacher • Stacy Beaugh • Thad Respet • The Goodwin Family Foundation • United Way of Mesa County • Valerie Ellsworth • Western Colorado Community Foundation • William and Anne Fox • Will Hays

### ... and to our board members who donate every year.

Angeline Roles • Chad Titmus • Chris Mueller • David Nelson • Kristi Redlinger • Pam Francil • Sarah Jean Casey • Shannon Keel • Shelley Flesher • Theresa Yoder



Our Giving Circle launched in 2024, and now you can become a Hope, Foundation or Legacy builder! Scan the QR Code to learn more.

188 hours were logged by community volunteers

48 wellness clinics were offered for older adults with CMU partners




480 food boxes were provided by Food Bank of the Rockies

37 children received weekly food bags in collaboration with Kids Aid

## REFLECTIONS + LOOKING AHEAD

At Doors 2 Success, we recognize that stable housing extends beyond simply having a roof—it is a foundation for balancing life essentials and fostering healthy, fulfilling lives. In light of recent funding reductions, the need for supportive housing initiatives has grown immensely. Many individuals and families we assist struggle with limited resources and access to vital community services, including how to navigate those services. Our **ongoing partnerships** with local organizations enable us to **bridge these gaps**, ensuring access to crucial healthcare, nutritious food, reliable transportation, and other key support systems. We hope this year’s annual report highlights the significance of our efforts and the growing need for continued support. We extend heartfelt gratitude to our dedicated team and funders who make this mission possible. Together, we are committed to advancing the reach and impact of Doors 2 Success in the face of evolving challenges.

 Kristi Redlinger, Board Chair

 Holly Webster, Executive Director